

1.Instalare

Documentatia recomandata pentru instalare si configurare se poate gasi la sau <http://www.oracle.com/pls/db112/homepage> insa pentru a scurta un pic drumul am sa exemplific, in continuare, un mod ceva mai simplu (si mai direct) de instalare astfel incat sa putem ajunge in final la o aplicatie WinMENTOR ENTERPRISE functionala, folosind drept exemplu versiunea de Oracle 11gR2 si, ca sistem de operare, Windows XP Service Pack 3.

Mai intai de toate ne asiguram ca pe calculator nu mai exista o alta aplicatie de la Oracle. Daca exista o dezinstalam, stergem directoare, facem curatenie; in caz contrar ne putem complica putin existenta ceea ce nu ne propunem in acest ghid. Lansam setup.exe

Oracle Database 11g Release 2 Installer - Installing database - Step 1 of 9

Configure Security Updates

Provide your email address to be informed of security issues, install the product and initiate configuration manager. [View details.](#)

Email:

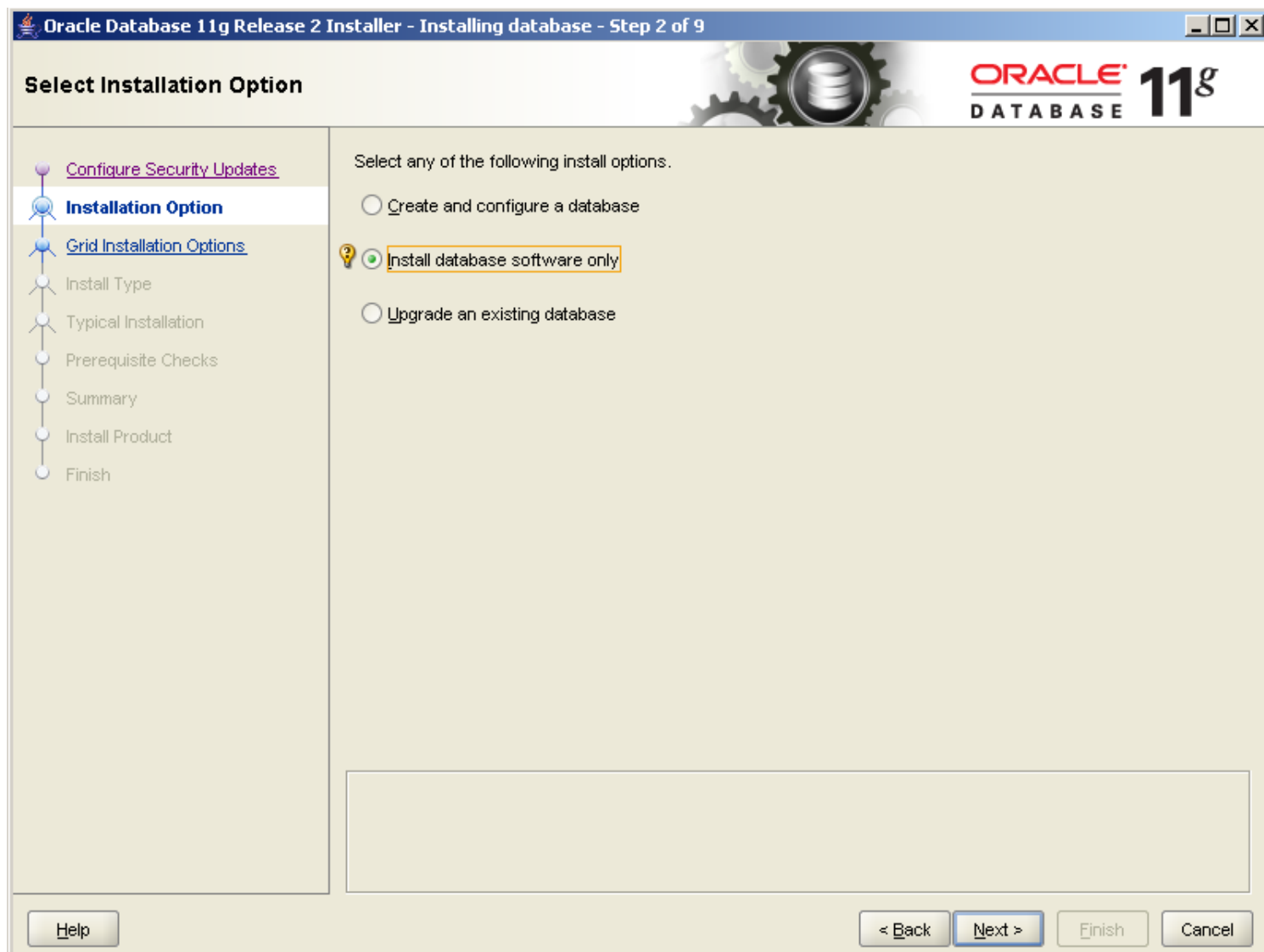
Easier for you if you use your My Oracle Support email address/username.

I wish to receive security updates via My Oracle Support.

My Oracle Support Password:

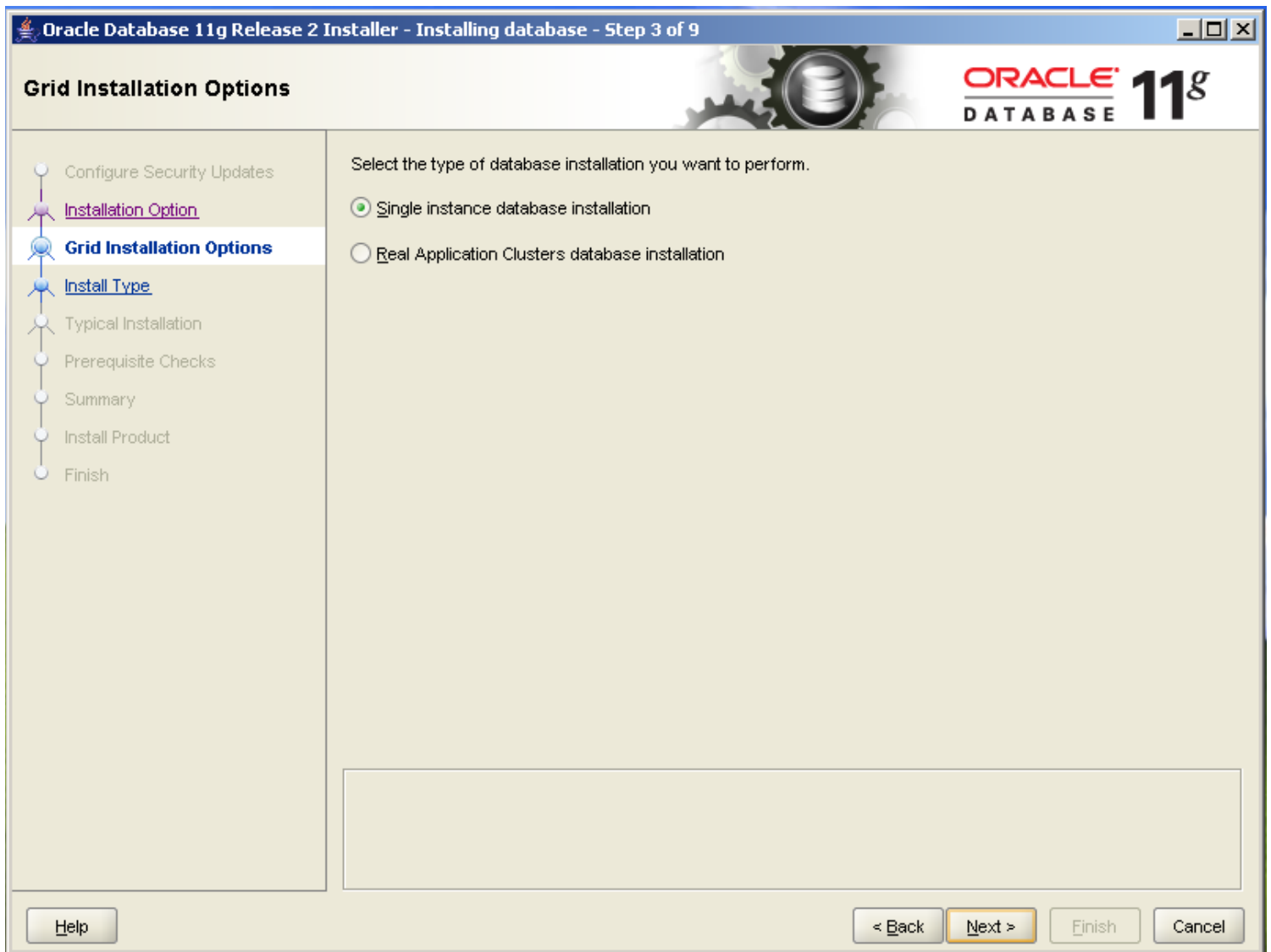
Help < Back Next > Finish Cancel

Debifam optiunea respectiva si mergem mai departe. Ne va apre un mesaj de atentionare ca am renuntat la acea optiune dar putem trece cu “Yes” peste el.



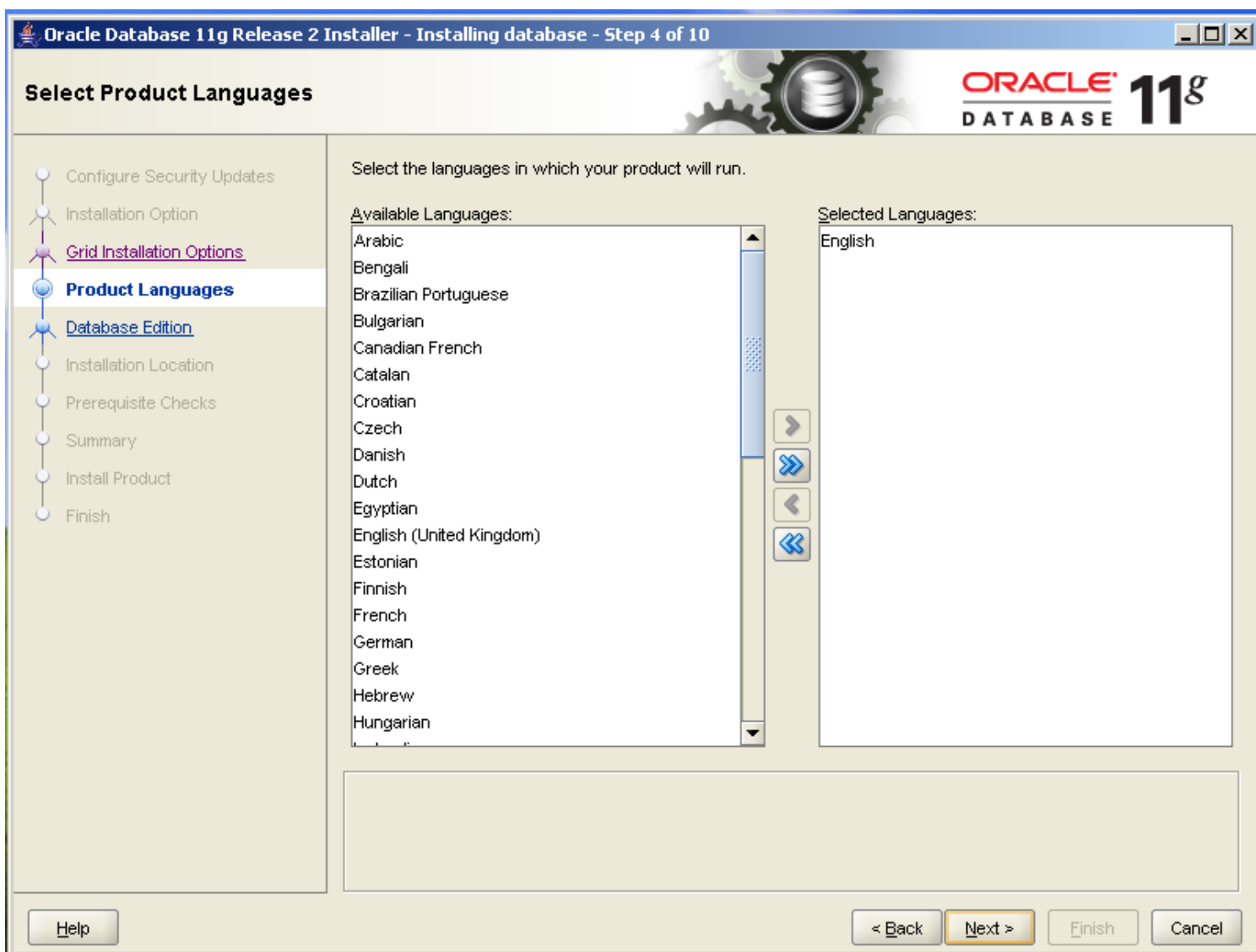
ecran1.2

In acest moment trebuie sa optam optiunea de instalare. Eu aleg doar instalarea softului pentru a exemplifica mai tarziu modul de creare a bezei de date. Se poate opta pentru prima optiune asa incat sa ne si creeze baza de date odata cu instalarea produsului.

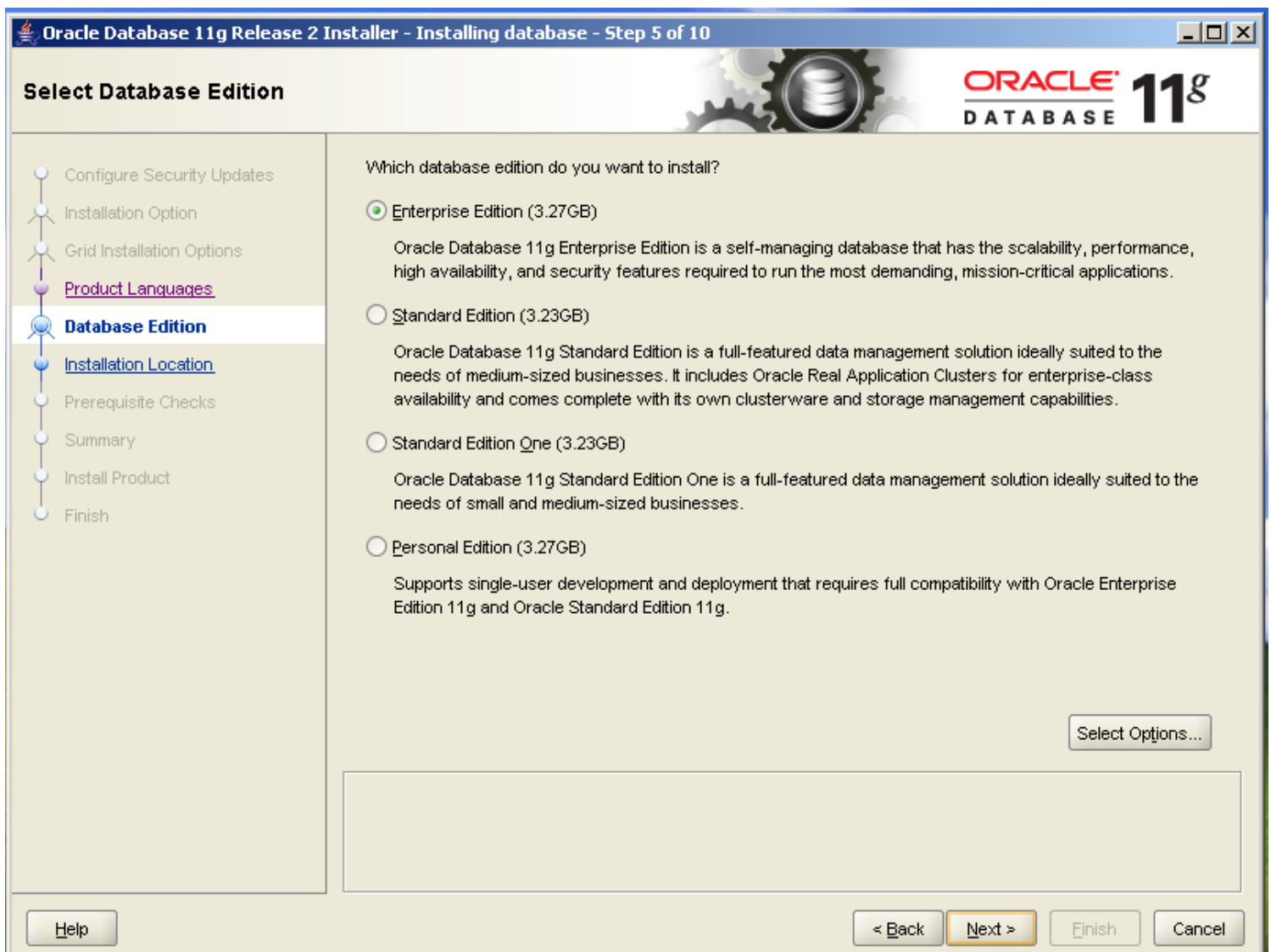


Ecran 1.3

Optam pentru “Single instance database instalation” si mergem mai departe

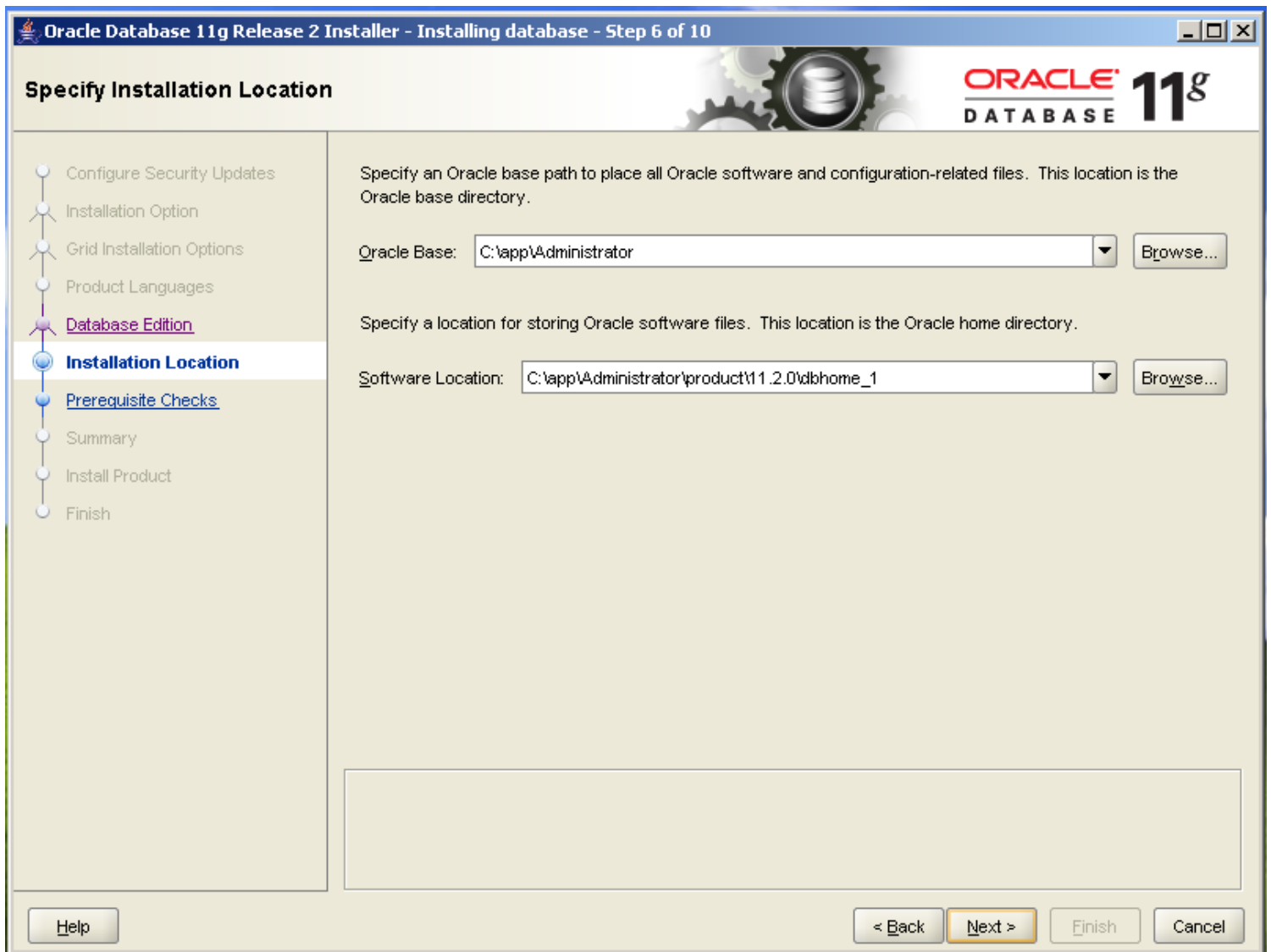


ecran 1.4



ecran 1.5

alegem versiunea de oracle pentru care suntem licentiati si mergem mai departe.




Ecran 1.6

Alegem calea de instalare si mergem mai departe...

Oracle Database 11g Release 2 Installer - Installing database - Step 9 of 10

Install Product



- Configure Security Updates
- Installation Option
- Grid Installation Options
- Product Languages
- Database Edition
- Installation Location
- Prerequisite Checks
- Summary
- Install Product**
- Finish

Progress


15%

Extracting files to 'C:\app\Administrator\product\11.2.0\dbhome_1'.

Status

➔	Oracle Database installation	In Progress
✓	• Prepare	Succeeded
➔	• Copy files	In Progress
	• Setup files	Pending

Details Retry Skip

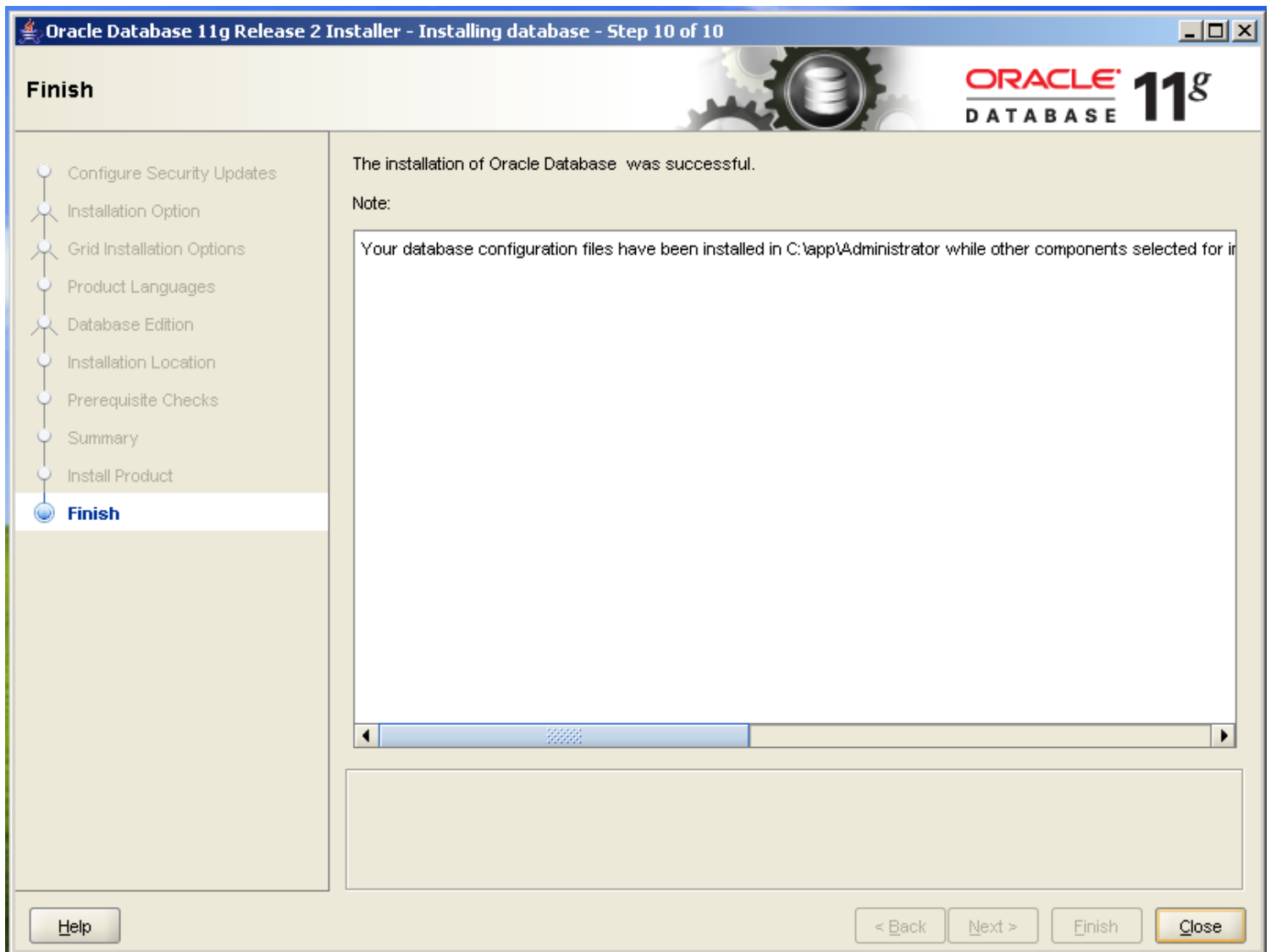


ORACLE DATABASE 11g
Grid Computing

Consolidate on Fast, Reliable, and Scalable Low-Cost Grids

Help < Back Next > Finish Cancel

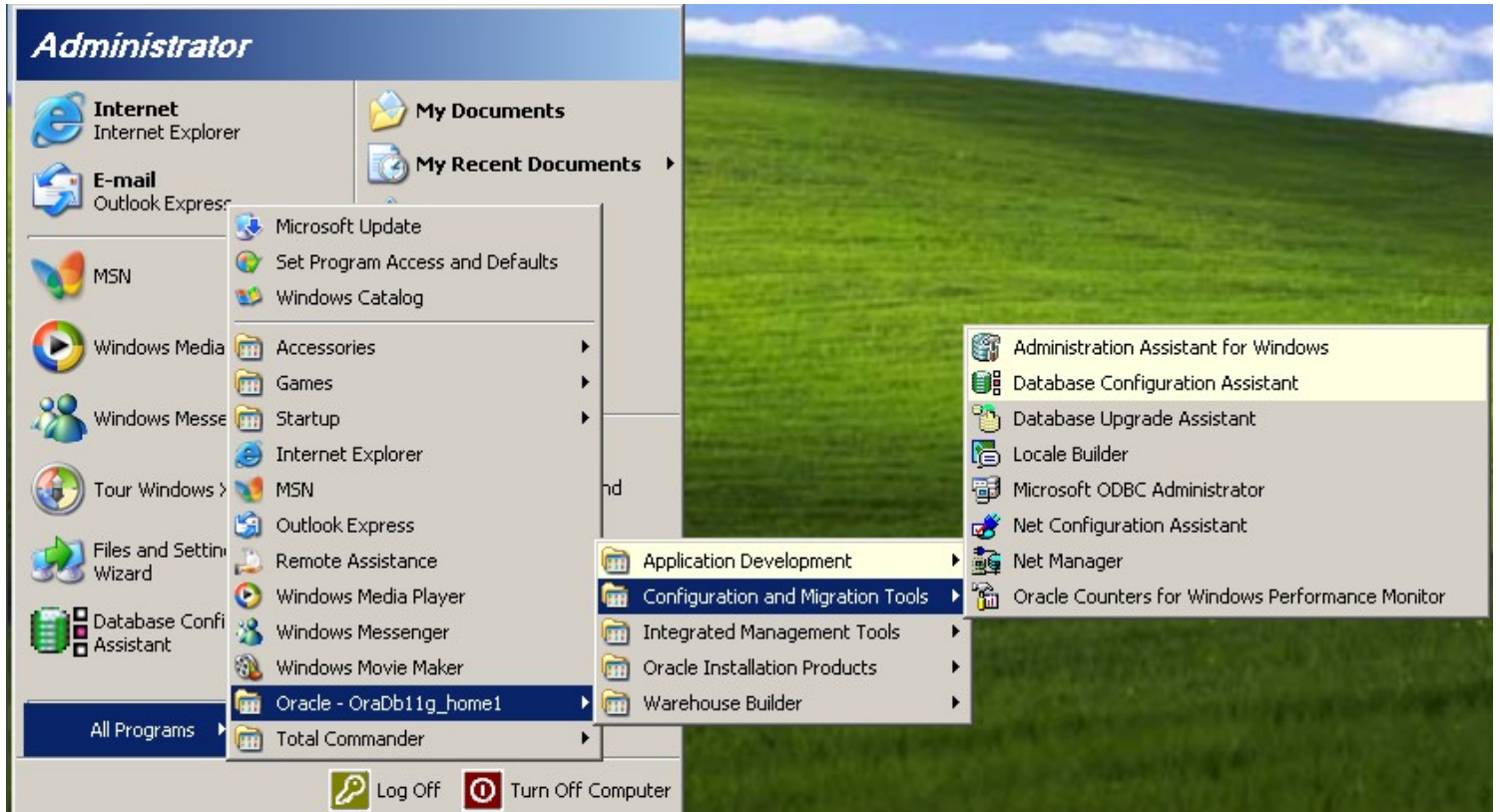
ecran 1.7



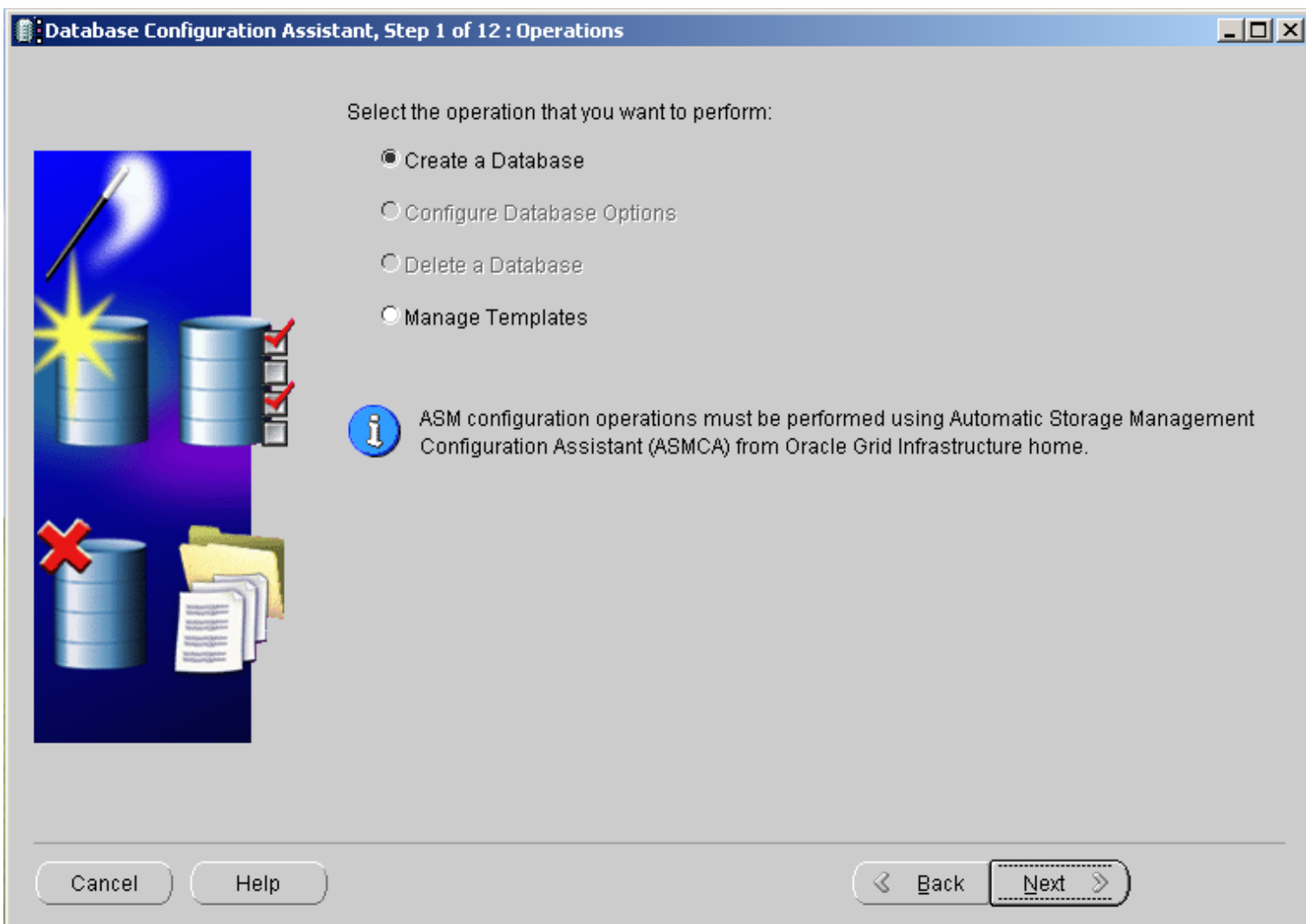
ecran 1.8

Am terminat cu instalarea softului. Mai departe va trebui sa cream o baza de date folosind Data Base Configuration Assistant.

1. Crearea baze de date



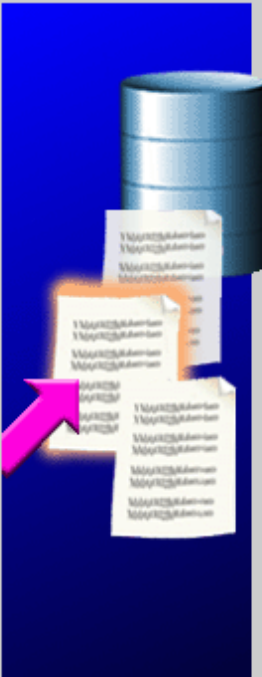
ecran 2.1



ecran 2.2

Database Configuration Assistant, Step 2 of 12 : Database Templates

Templates that include datafiles contain pre-created databases. They allow you to create a new database in minutes, as opposed to an hour or more. Use templates without datafiles only when necessary, such as when you need to change attributes like block size, which cannot be altered after database creation.



Select	Template	Includes Datafiles
<input checked="" type="radio"/>	General Purpose or Transaction Processing	Yes
<input type="radio"/>	Custom Database	No
<input type="radio"/>	Data Warehouse	Yes

Show Details...

Cancel Help < Back Next >

ecran 2.3



An Oracle database is uniquely identified by a Global Database Name, typically of the form "name.domain".

Global Database Name:

A database is referenced by at least one Oracle instance which is uniquely identified from any other instance on this computer by an Oracle System Identifier (SID).

SID:

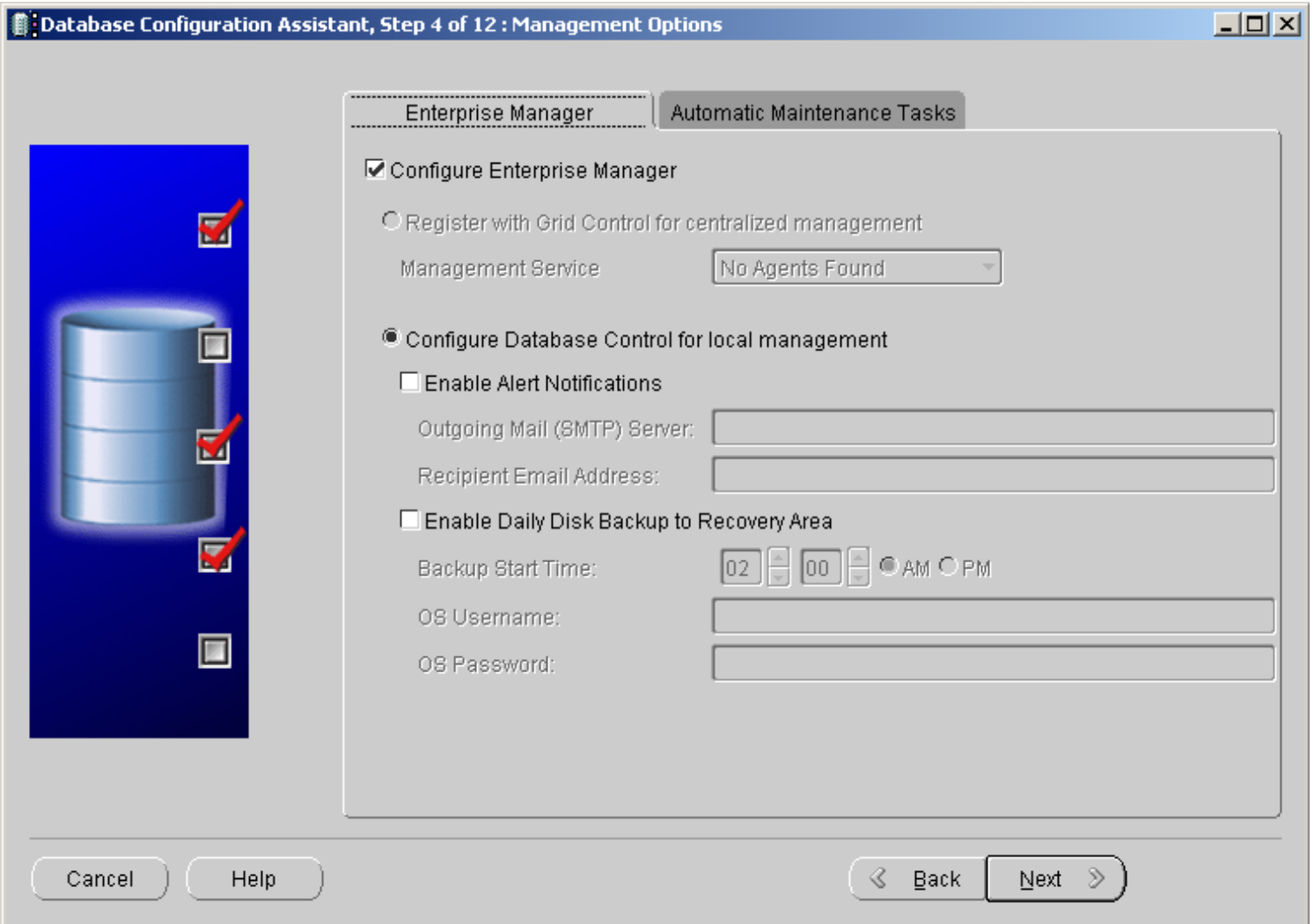
Cancel

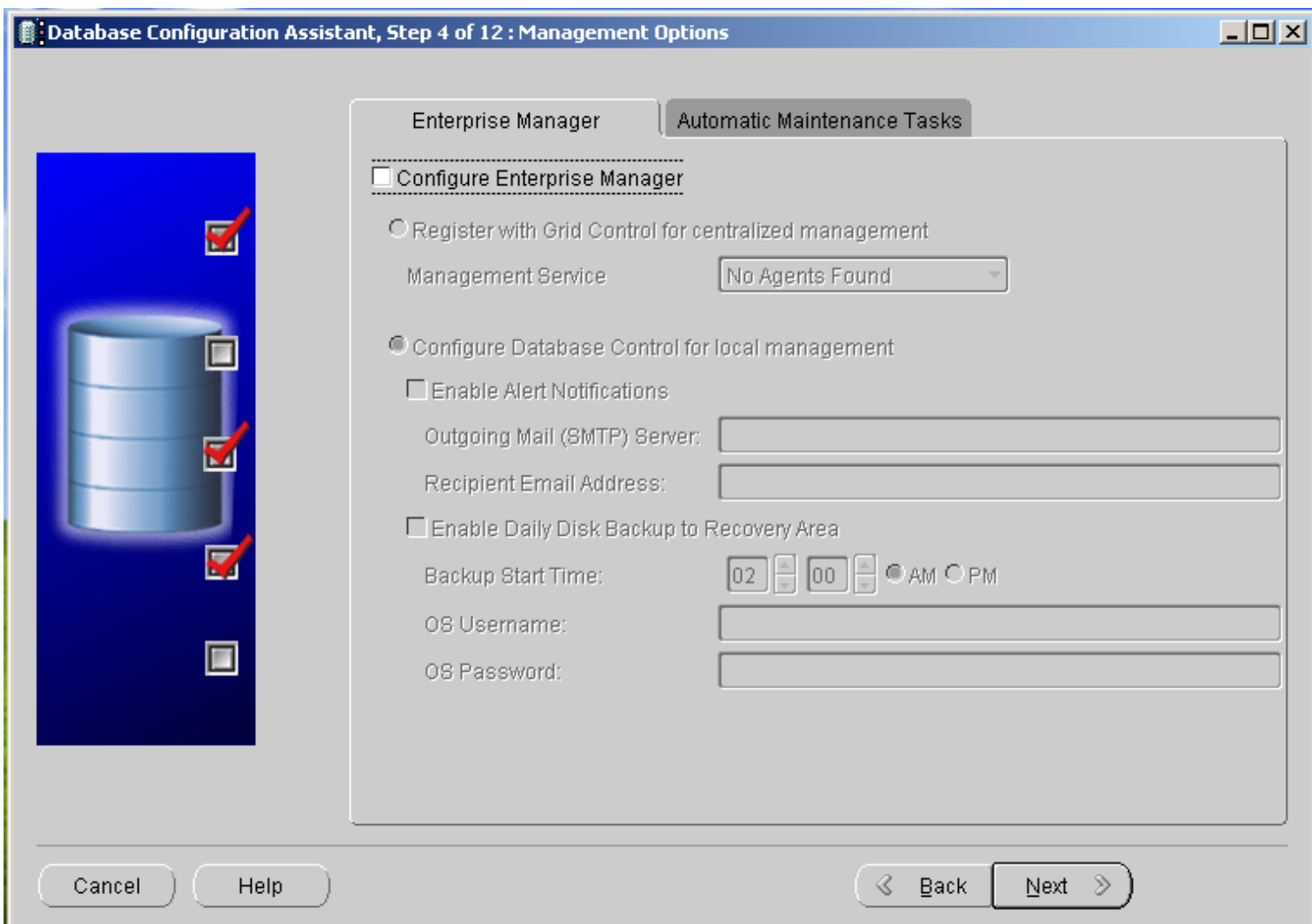
Help

< Back

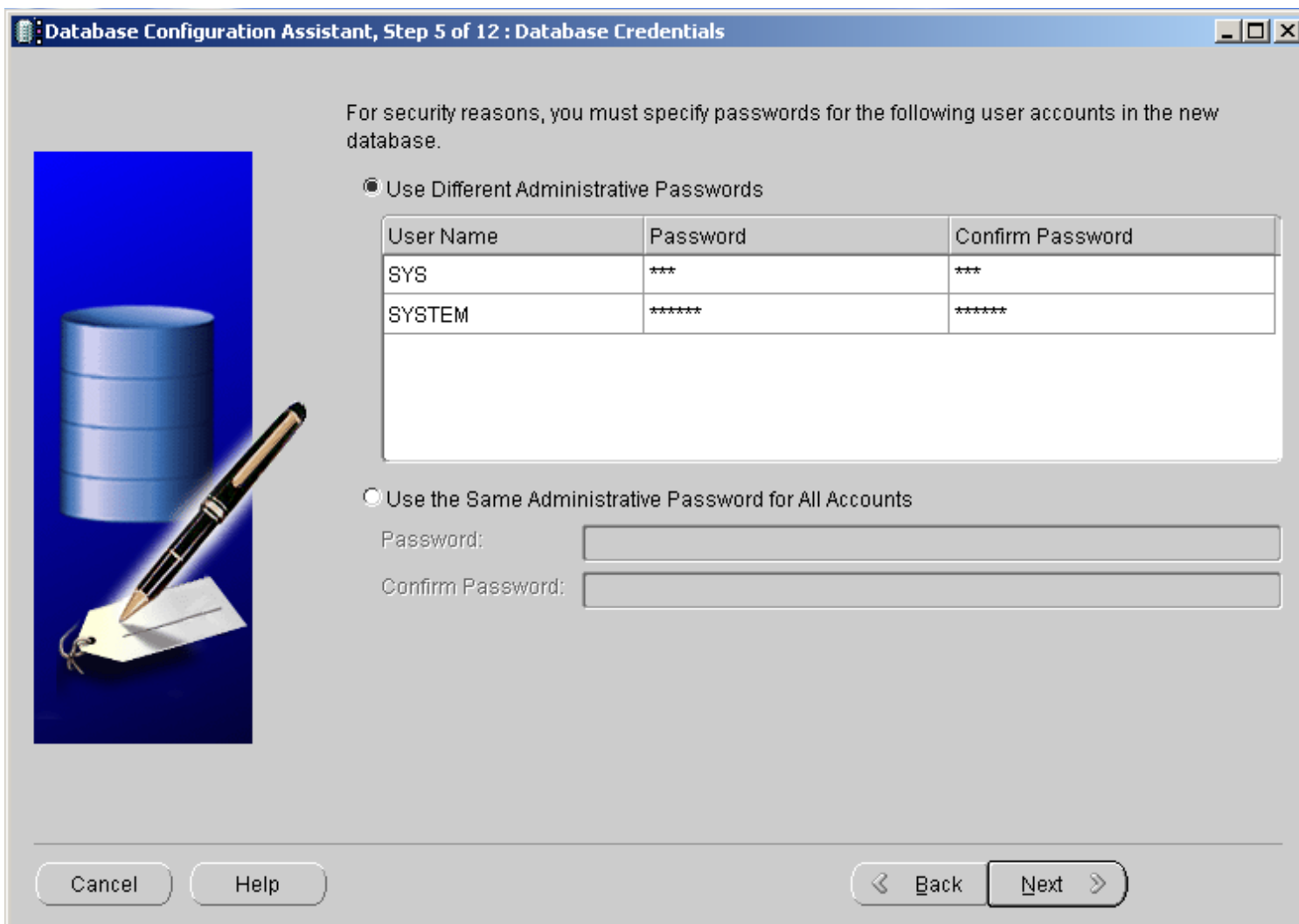
Next >

ecran 2.4



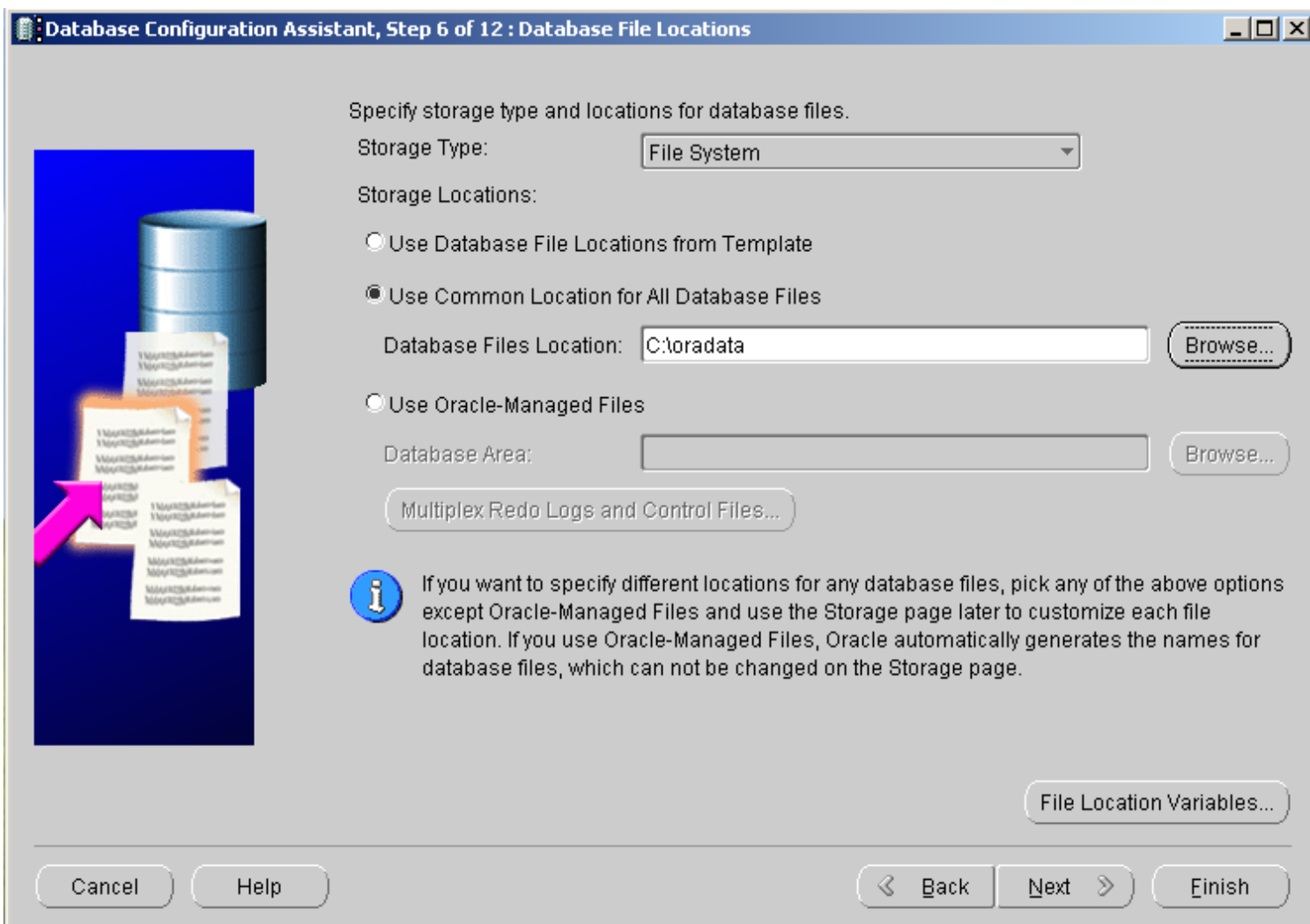


ecran 2.6

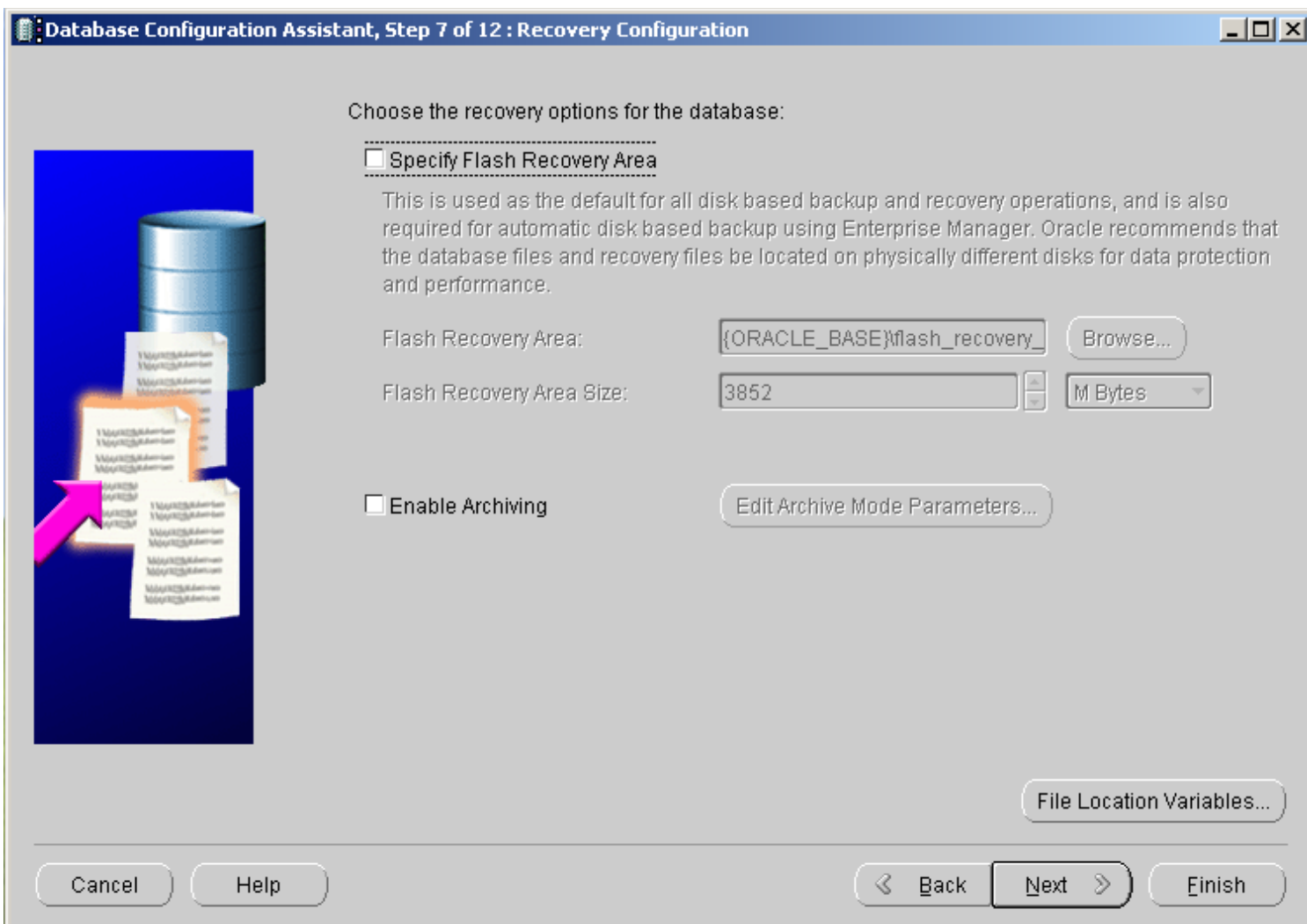


ecran 2.7

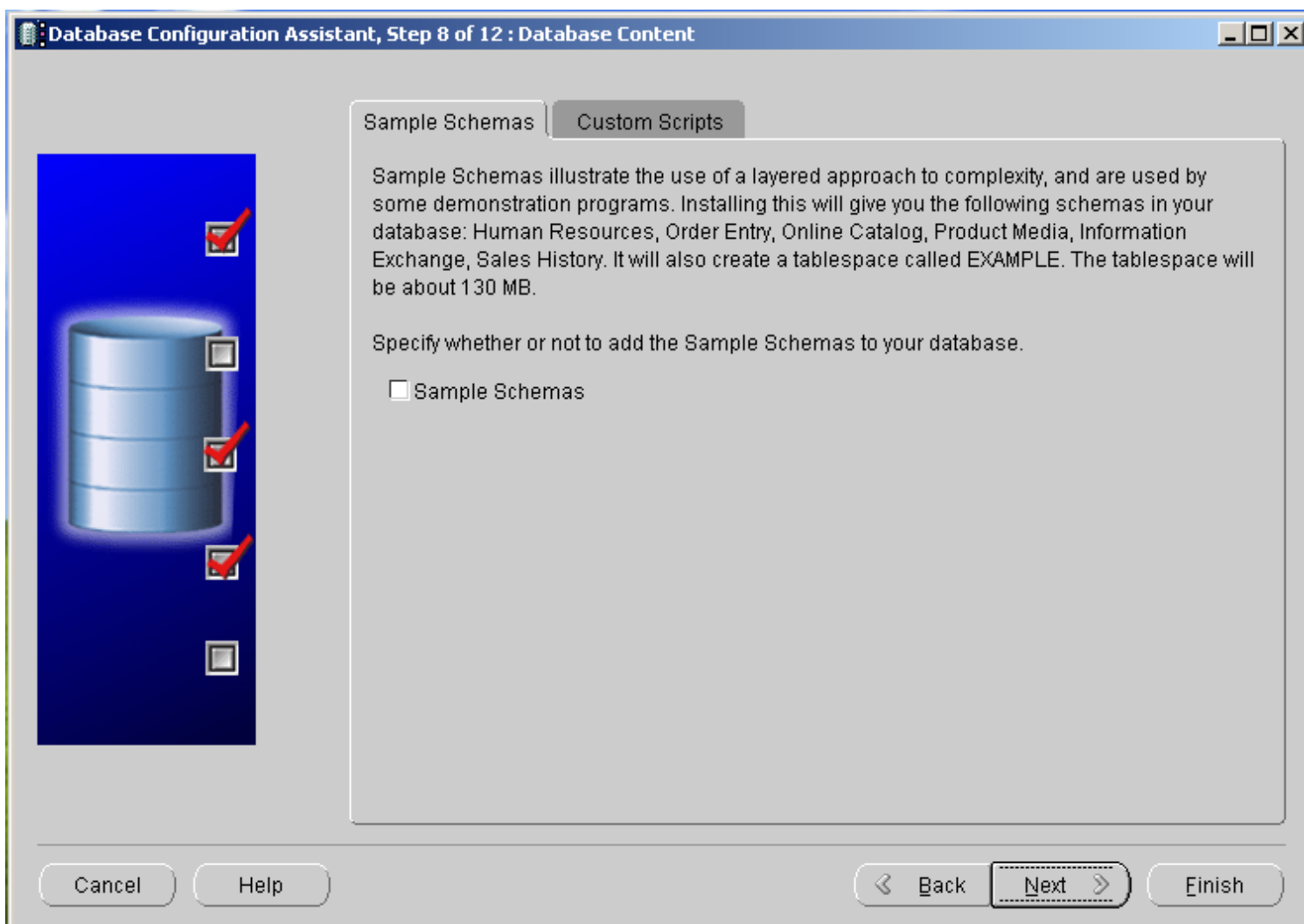
in functie de parolele pe care le introducem e posibil ca oracle sa ne atentioneze ca nu satisfac conditiile de securitate a parolelor; trecem peste acel mesaj de atentionare

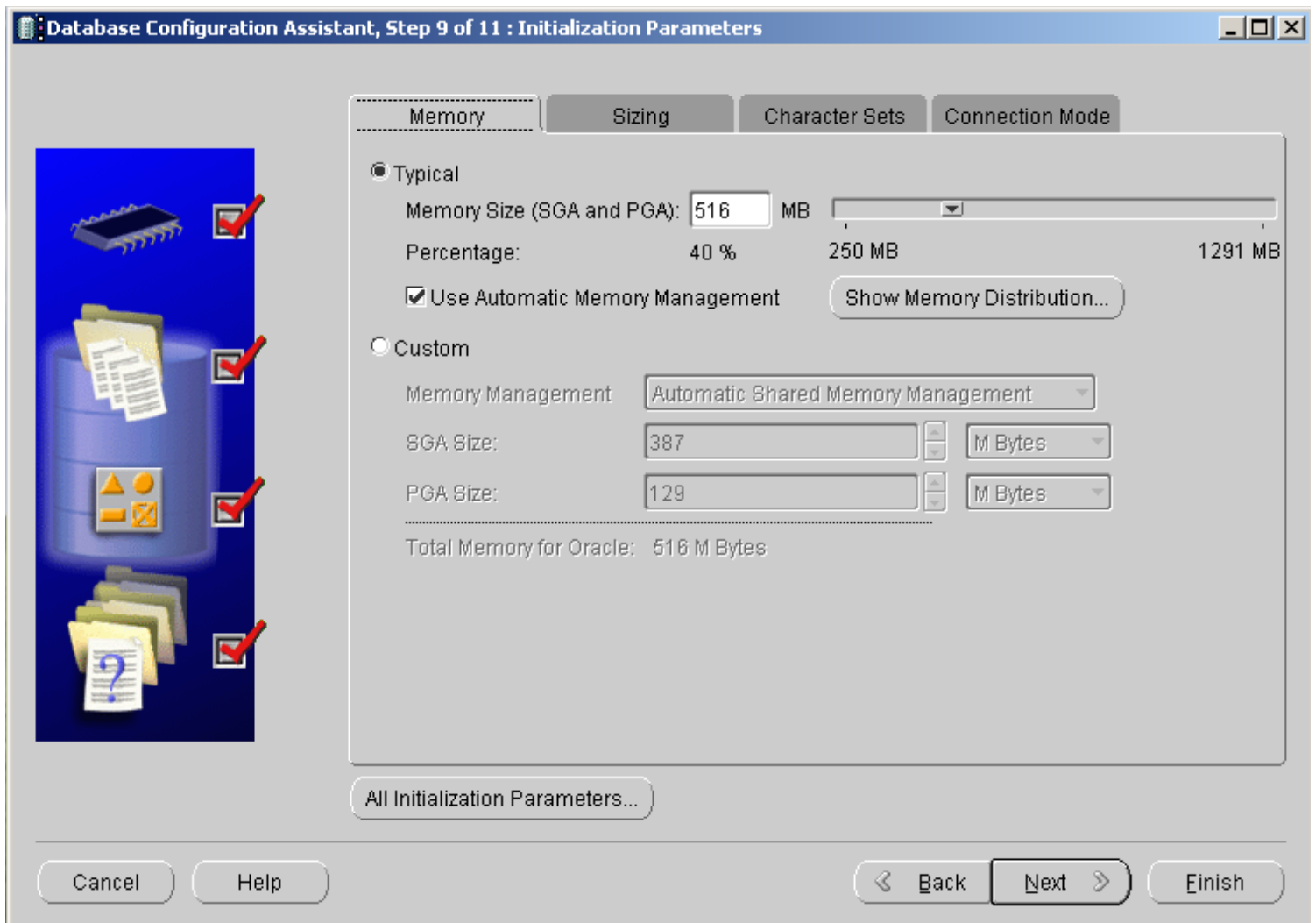


ecran 2.8



ecran 2.9





ecran 2.11

Versiunea 11 de la oracle vine cu o optiune de securitate a parolelor, optiune care am vazut ca incurc mult operatorii WME. Asa ca in acest ecran o putem dezactiva. Click pe All Initialization Parameters

Name	Value	Override Def...	Category
db_create_online_log_dest_1			File Configuration
db_create_online_log_dest_2			File Configuration
db_domain		✓	Database Identification
db_name	winmdb2	✓	Database Identification
db_recovery_file_dest	{ORACLE_BAS...		File Configuration
db_recovery_file_dest_size	4039114752		File Configuration
db_unique_name			Miscellaneous
instance_number	0		Cluster Database
log_archive_dest_1			Archive
log_archive_dest_2			Archive
log_archive_dest_state_1	enable		Archive
log_archive_dest_state_2	enable		Archive
nls_language	AMERICAN		NLS
nls_territory	AMERICA		NLS
open_cursors	300	✓	Cursors and Library ...
pga_aggregate_target	135266304		Sort, Hash Joins, Bit...
processes	150	✓	Processes and Sess...
remote_listener			Network Registration
remote_login_passwordfile	EXCLUSIVE	✓	Security and Auditing
sessions	115		Processes and Sess...
sga_target	405798912		SGA Memory
shared_servers	0		Shared Server
star_transformation_enabled	FALSE		Optimizer
undo_tablespace	UNDOTBS1	✓	System Managed Un...

ecran 2.12

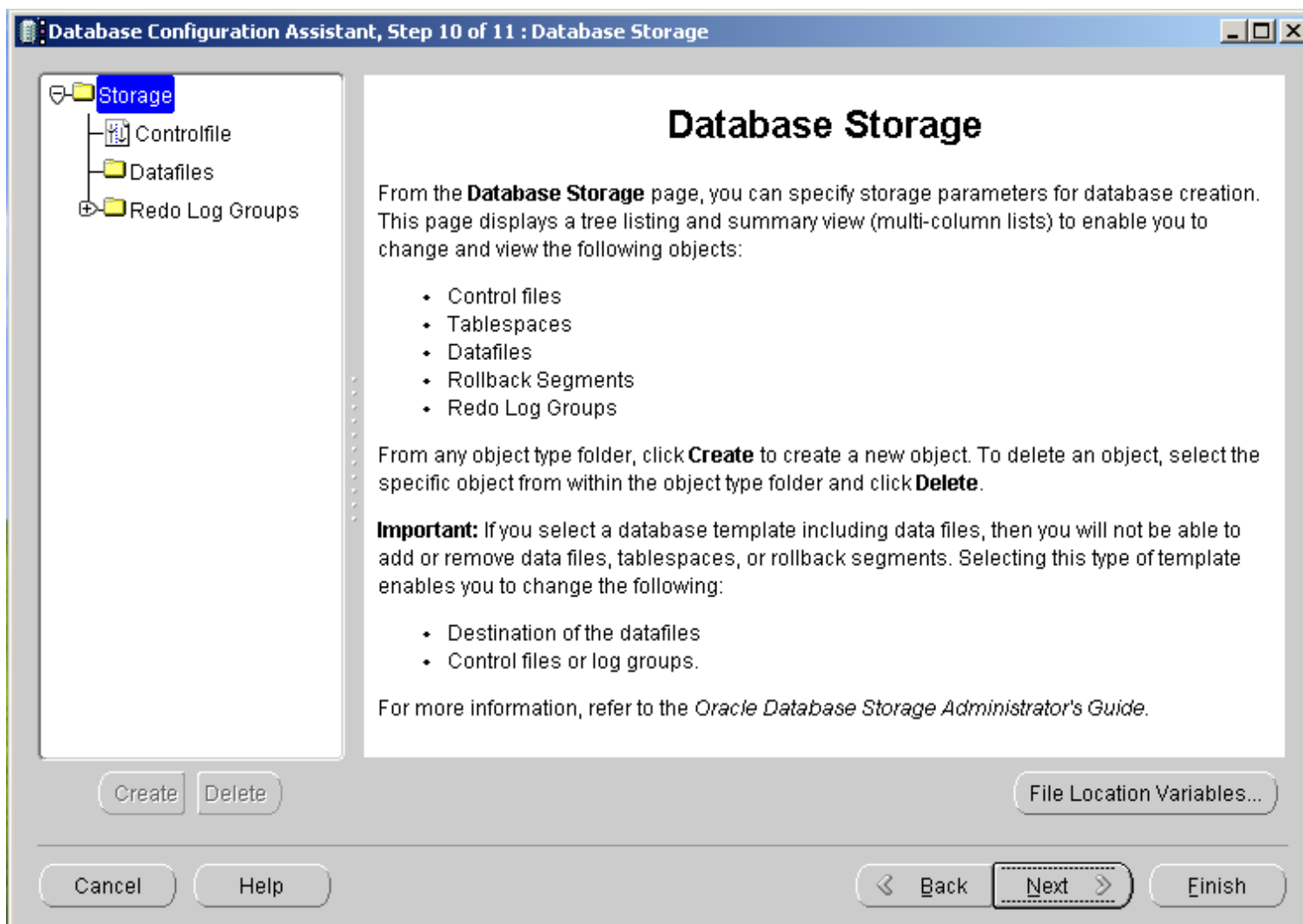
Click pe Show Advanced Parameters si cautam parametruc sec_case_sensitive_logon si modificam valoare implicita din TRUE in FALSE

Name	Value	Override Def...	Basic	Category
redo_transport_user				Miscella
remote_dependencies_mode	TIMESTAMP			PL/SQL
remote_listener			✓	Network
remote_login_passwordfile	EXCLUSIVE	✓	✓	Security
remote_os_roles	FALSE			Security
replication_dependency_tracking	TRUE			Distribut
resource_limit	FALSE			Resourc
resource_manager_plan				Resourc
result_cache_max_result	5			Miscella
result_cache_max_size	2129920			Miscella
result_cache_mode	MANUAL			Miscella
result_cache_remote_expiration	0			Miscella
resumable_timeout	0			Miscella
rollback_segments				System
sec_case_sensitive_logon	FALSE	✓		Miscella
sec_max_failed_login_attempts	10			Miscella
sec_protocol_error_further_action	CONTINUE			Miscella
sec_protocol_error_trace_action	TRACE			Miscella
sec_return_server_release_banner	FALSE			Miscella
service_names				Network
session_cached_cursors	50			Cursors
session_max_open_files	10			Objects
sessions	115		✓	Process
sga_max_size	851443712			SGA Mer

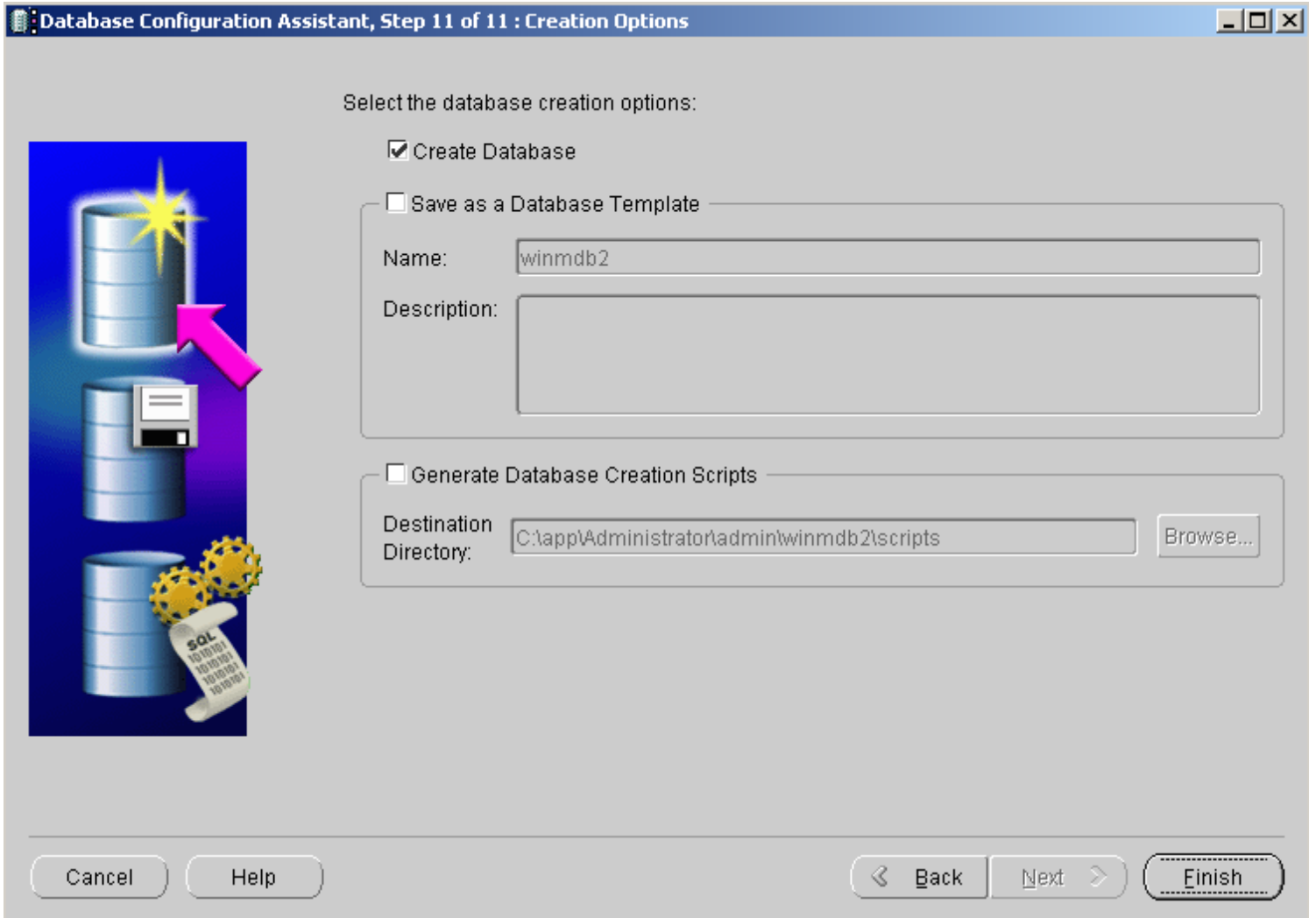
Hide Advanced Parameters Close Show Description Help

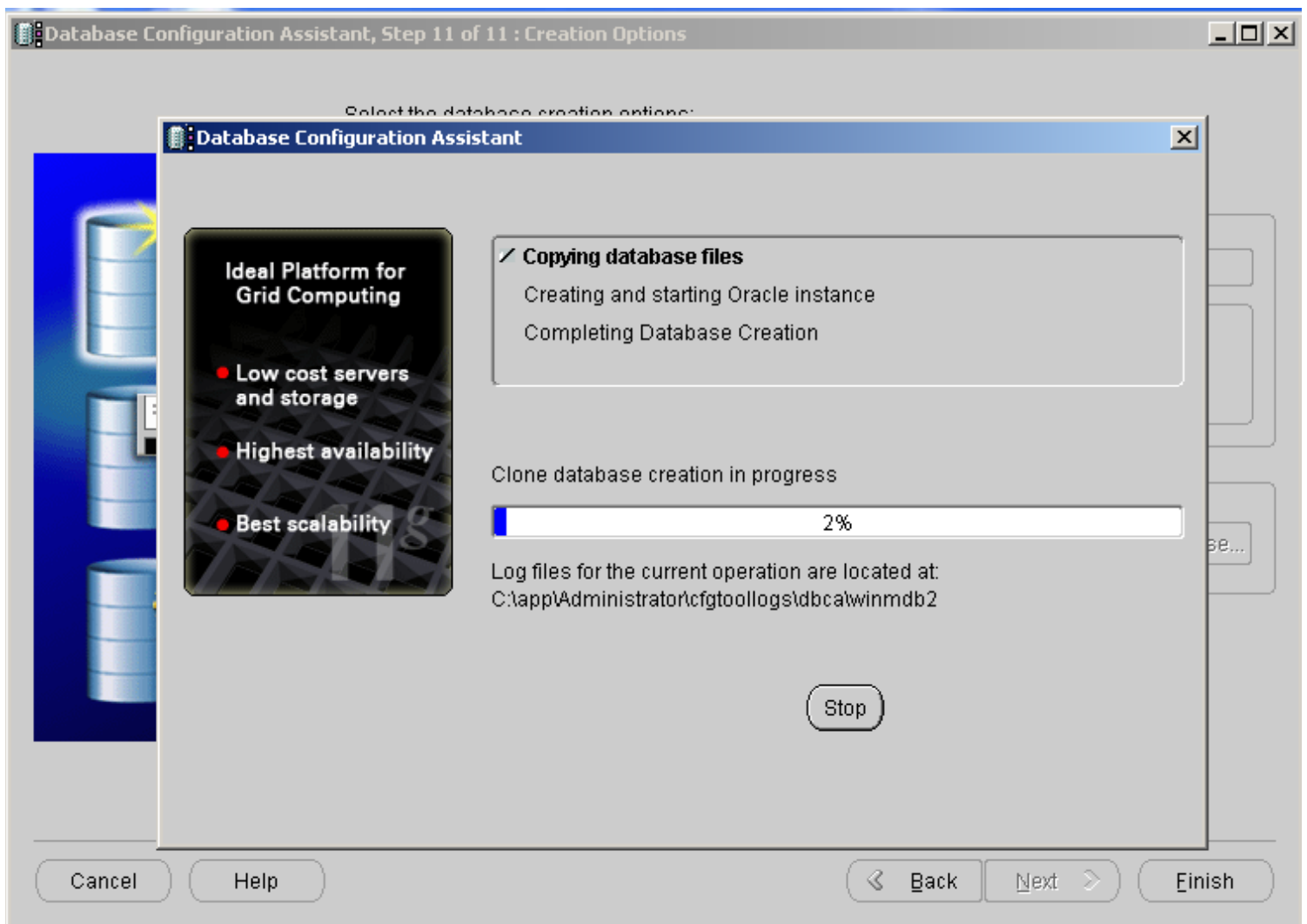
ecran 2.13

Efectul acestei modificari este acela ca parolele si numele de utilizatori din baza de date nu vor mai fi “case sensitive”. Daca nu ati facut acest lucru in momentul crearii baze de date, aceasta optiune mai poate fi dezactivata si apoi. Voi exemplifica mai incolo.



Ecran 2.14





ecran 2.16

Pentru dezactivarea optiunii de securitate pe care am exemplificat-o mai sus putem face astfel:


```
C:\WINDOWS\system32\cmd.exe - sqlplus / as sysdba
Microsoft Windows XP [Version 5.1.2600]
(C) Copyright 1985-2001 Microsoft Corp.

C:\Documents and Settings\Administrator>sqlplus / as sysdba

SQL*Plus: Release 11.2.0.1.0 Production on Thu Nov 4 15:42:57 2010
Copyright (c) 1982, 2010, Oracle. All rights reserved.

Connected to:
Oracle Database 11g Enterprise Edition Release 11.2.0.1.0 - Production
With the Partitioning, OLAP, Data Mining and Real Application Testing options
SQL> alter system set sec_case_sensitive_logon = false scope=both;

System altered.

SQL>
```

ecran 2.17

in continuare vom mai dezactiva inca doua optiuni de securitate a parolei care am vazut ca pe majoritatea incurca:

```
C:\WINDOWS\system32\cmd.exe - sqlplus / as sysdba
Microsoft Windows XP [Version 5.1.2600]
(C) Copyright 1985-2001 Microsoft Corp.

C:\Documents and Settings\Administrator>sqlplus / as sysdba
SQL*Plus: Release 11.2.0.1.0 Production on Thu Nov 4 15:48:52 2010
Copyright (c) 1982, 2010, Oracle. All rights reserved.

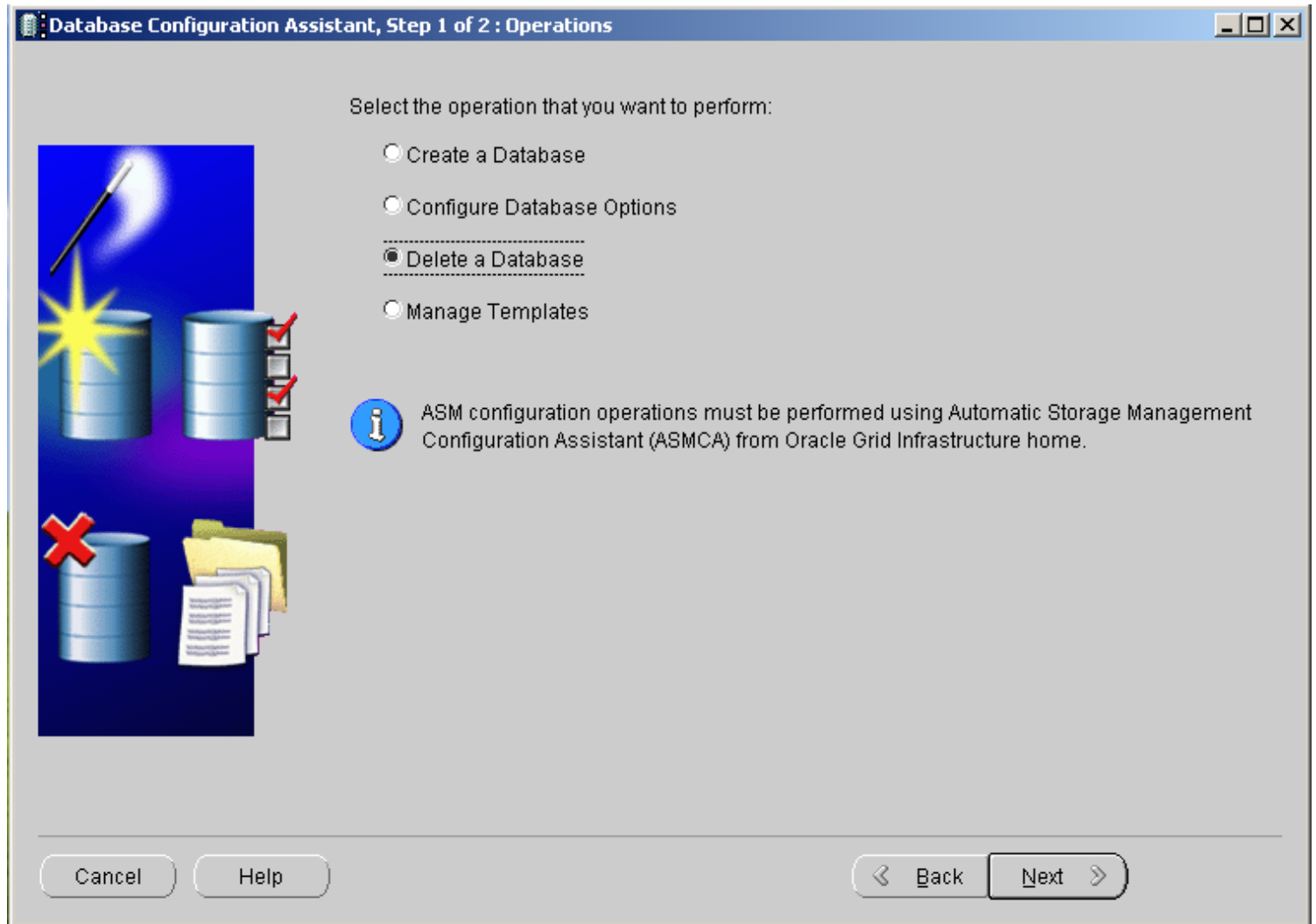
Connected to:
Oracle Database 11g Enterprise Edition Release 11.2.0.1.0 - Production
With the Partitioning, OLAP, Data Mining and Real Application Testing options
SQL> ALTER PROFILE DEFAULT LIMIT PASSWORD_LIFE_TIME UNLIMITED;
Profile altered.
SQL> ALTER PROFILE DEFAULT LIMIT FAILED_LOGIN_ATTEMPTS UNLIMITED;
Profile altered.
SQL>
```

prima dintre ele are ca efect neexpirarea parolelor, implicit ele expira dupa 90 de zile (daca nu ma insel), iar a doua optiune inhiba blocarea contului utilizator daca acesta a gresit parola de prea multe ori.

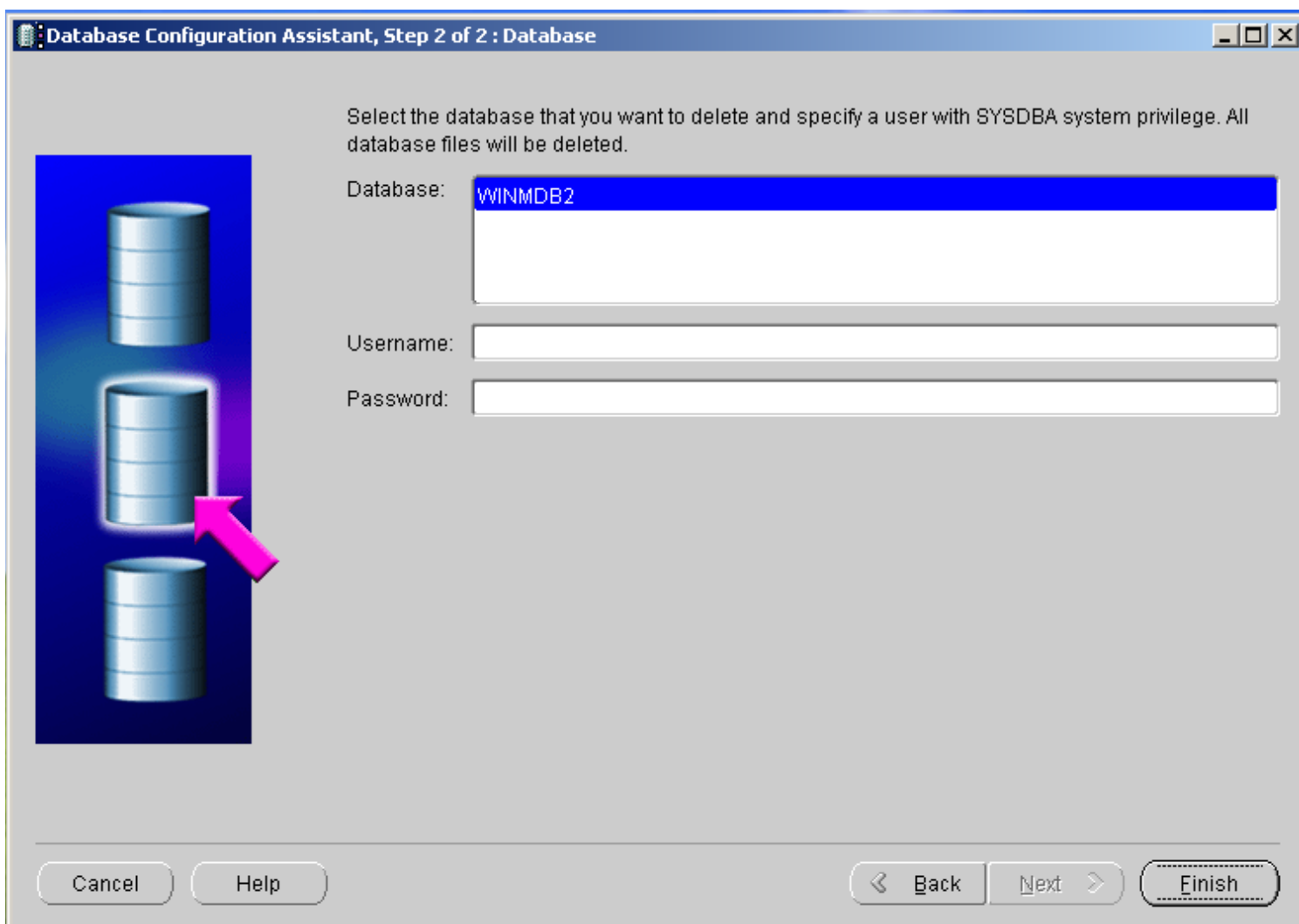
Dupa crearea bazei de date urmeaza configurarea (si crearea dupa caz) a listener-ului si a clientilor. Nu voi prezenta aceste lucruri pentru ca sunt identice cu cele de pana acum (aceiasi pasi ca in configurarea pe oracle 10g).

3.Dezinstalare

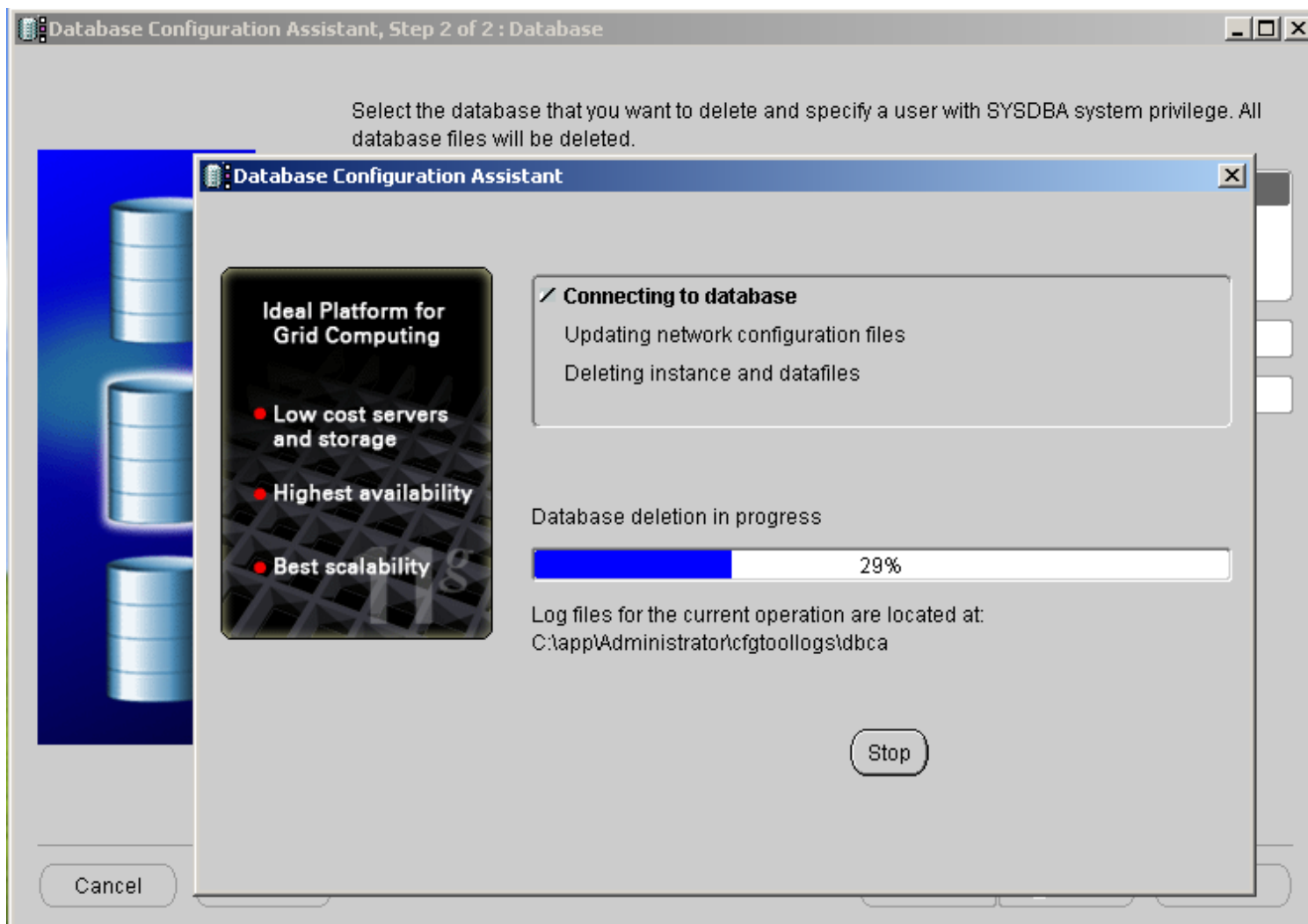
Inainte de dezinstalarea propriuzisa a softului, trebuie sa stergem baza de date. Pentru aces lucru vom folosi acelasi utilitar pe care l-am folosit la crearea bazei de date.



Ecran 3.1



ecran 3.2



ecran 3.3

Dezinstalarea softului e putin mai diferita decat pe 10 g. Trebuia sa rulam scriptul din calea
c:\app\Administrator\product\11.2.0\dbhome_1\deinstall\deinstall.bat

Aceasta cale este specifica instalarii exemplificate mai sus. Fiecare va adapta in functie de calea de instalare.

```
C:\WINDOWS\system32\cmd.exe - c:\app\Administrator\product\11.2.0\dbhome_1\deinstall\deinst...
Microsoft Windows XP [Version 5.1.2600]
(C) Copyright 1985-2001 Microsoft Corp.

C:\Documents and Settings\Administrator>c:\app\Administrator\product\11.2.0\dbhome_1\deinstall\deinstall.bat
Checking for required files and bootstrapping ...
Please wait ...

-
```

Ecran 3.3

```
C:\WINDOWS\system32\cmd.exe - C:\DOCUME~1\ADMINI~1\LOCALS~1\Temp\startup.bat 1 C:\DOCU...
Checking for existence of central inventory location C:\Program Files\Oracle\Inventory
Inventory

Install check configuration END

Checking Windows and .NET products configuration START

The following Windows and .NET products will be deconfigured from the Oracle home :
ode.net,ntoledb,oramts,oo4o

Checking Windows and .NET products configuration END

Network Configuration check config START

Network de-configuration trace file location: C:\DOCUME~1\ADMINI~1\LOCALS~1\Temp\OraDeinstall12010-11-04_16-05-02\logs\netdc_check768104699158923465.log

Network Configuration check config END

Database Check Configuration START

Database de-configuration trace file location: C:\DOCUME~1\ADMINI~1\LOCALS~1\Temp\OraDeinstall12010-11-04_16-05-02\logs\databasedc_check6502546289755626064.log

Use comma as separator when specifying list of values as input

Specify the list of database names that are configured in this Oracle home []:
```

ecran 3.4

Aici apasam ENTER pentru ca baza de date tocmai am sters-o mai sus , deci nu mai avem nicio baza de date.
Ne va mai intreba la un moment dat daca suntem sigur ca vrem sa dezinstalăm...raspundem cu “y” ..si apoi gata